

*SPECIAL BUDGET  
SERIES  
FLAGPOLES...*



*... Affordable Elegance.*

---

## SPECIAL BUDGET SERIES FLAGPOLES

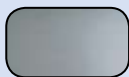
These cone tapered ground set aluminum flagpoles are precision fabricated from new, 6063-T6 tubing utilizing the industry's most sophisticated, state-of-the-art manufacturing processes.

### STANDARD FINISHES

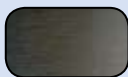
All flagpoles are highly polished with fine grain aluminum oxide cloth resulting in a deep satin lustre finish. The elegant, soft sheen remains maintenance free. In addition to satin - clear, dark bronze and black anodized finishes are also available as standard. Other finishes are available - contact us for details.



SATIN



CLEAR



DARK BRONZE



BLACK

### SPECIFICATIONS

MODEL	EXPOSED HEIGHT	OVERALL LENGTH	BUTT DIA.	TOP DIA.	WALL
ECM15	15'	17'	2 <sup>3</sup> / <sub>8</sub> "	1 <sup>7</sup> / <sub>8</sub> "	.140
ECM20	20'	22'	2 <sup>3</sup> / <sub>8</sub> "	1 <sup>7</sup> / <sub>8</sub> "	.140
ECSS15	15'	17'	3"	1 <sup>7</sup> / <sub>8</sub> "	.125
ECSS20	20'	22'	3"	1 <sup>7</sup> / <sub>8</sub> "	.125
ECSS25	25'	27'	3"	1 <sup>7</sup> / <sub>8</sub> "	.125
ECS20	20'	22'	3 <sup>1</sup> / <sub>2</sub> "	2 <sup>3</sup> / <sub>8</sub> "	.125
ECS25	25'	27'	3 <sup>1</sup> / <sub>2</sub> "	2 <sup>3</sup> / <sub>8</sub> "	.125
ECS30	30'	33'	4"	2 <sup>3</sup> / <sub>8</sub> "	.125
ECS35	35'	38 <sup>1</sup> / <sub>2</sub> '	5"	3"	.156

### STANDARD ACCESSORIES

Gold anodized aluminum ball ornament, cast aluminum stationary truck with pulley (ECS35 has a revolving truck as standard), solid braided polypropylene halyard, cast aluminum cleat with mounting screws, swivel flag snaps with vinyl covers on poles with a 3<sup>1</sup>/<sub>2</sub>", 4" or 5" butt diameter; nylon flag snaps on poles with a 2<sup>3</sup>/<sub>8</sub>" or 3" butt diameter and a PVC foundation sleeve (ECS30 and ECS35 poles have a galvanized steel sleeve as standard). Also, a flash collar is available as an optional accessory.

***Ask about our UPS'able version of the ECSS20 and ECSS25 Flagpoles!***