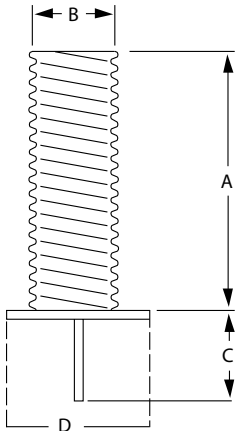


FOUNDATION SLEEVES, MOUNTING HARDWARE & LIGHTS

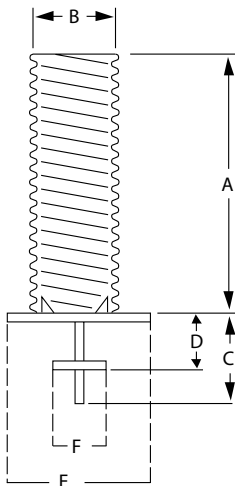
GALVANIZED STEEL FOUNDATION SLEEVES

The most common type of flagpole installation is the in-ground foundation sleeve method which calls for 1' of the flagpole to be encased in the ground sleeve for each 10' of exposed flagpole height. The diameter of the sleeve should be at least 2" greater than the outside diameter of the flagpole with the area between the flagpole and the sleeve filled with dry sand. Sleeves with a 6" diameter are supplied with a base plate and grounding spike. Sleeves with a diameter of greater than 6" are supplied with a base plate, support plate, grounding spike and, for ease of vertical alignment, steel centering wedges welded to the inside of the base plate. If you require other sizes than listed or have special on-site conditions please consult the factory.



WITH BASE PLATE & GROUND SPIKE

ITEM #	A	B	C	D	1-5	6+	LBS.
380000	2'	6"	6"	8"	\$74	\$69	20
380002	3'	6"	6"	8"	90	86	24

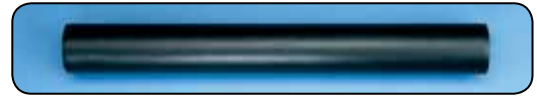


WITH BASE PLATE, SUPPORT PLATE, GROUNDING SPIKE & STEEL CENTERING WEDGES

ITEM #	A	B	C	D	E	F	1-5	6+	LBS.
380003	3'	8"	18"	6"	12"	6"	\$126	\$116	33
380004	3 1/2'	8"	18"	6"	12"	6"	126	120	40
380005	3'	10"	18"	6"	16"	8"	137	130	40
380006	3 1/2'	10"	18"	6"	16"	8"	147	140	45
380007	4'	12"	18"	6"	16"	8"	200	189	57
380008	5'	12"	18"	6"	18"	9"	231	218	65
380009	5'	15"	18"	6"	20"	10"	410	389	85
380010	6'	15"	18"	10"	20"	10"	473	452	120
380011	6'	18"	24"	10"	24"	12"	525	499	130
380012	7'	15"	24"	12"	24"	12"	525	499	140
380013	7'	18"	24"	12"	24"	12"	609	578	150
380014	8'	18"	24"	12"	24"	12"	651	620	160

PVC SLEEVES

Poles slip into form fit sleeves snugly - no voids to fill with sand. Standard sleeves require wood wedges & sand for a proper installation.



ITEM #	FOR POLE		TYPE	1-5	6+	LBS.
	DIA.	LEN.				
380015	1 3/8"	12"	FORM FIT	\$5.90	\$5.30	.14
380016	1 5/8"	15"	FORM FIT	7.00	6.30	.20
380017	1 3/4"	20"	FORM FIT	8.20	7.40	.26
380018	2"	15"	FORM FIT	10.60	9.40	.25
380020	2"	20"	FORM FIT	11.70	10.60	.34
380021	2 1/2"	30"	FORM FIT	15.50	14.50	1.1
380022	3"	20"	FORM FIT	18.90	17.90	.95
380023	3" - 3 1/2"	24"	STANDARD	16.80	16.00	1.6
380024	3" - 3 1/2"	30"	STANDARD	23.00	22.00	1.9

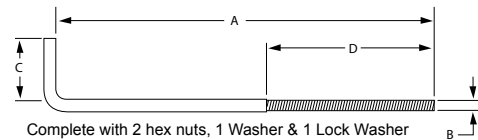
FIBERGLASS SLEEVES



ITEM #	LENGTH	DIAMETER	1-5	6+	LBS.
380025	18"	6.3"	\$29	\$27	1.1
380026	24"	5"	41	38	1.4
380194	30"	6.3"	44	41	2.2
380195	30"	9.25"	87	77	4.0
380027	36"	8"	87	77	4.4
380029	48"	8"	110	98	6.2
380030	60"	14"	316	285	18
380031	72"	14"	404	363	27
380032	84"	21"	876	819	34

GALVANIZED STEEL ANCHOR BOLTS

For Shoe Base Installations



Complete with 2 hex nuts, 1 Washer & 1 Lock Washer

ITEM #	A	B	C	D	1-5	6+	LBS.
380037	16"	5/8"	3 1/2"	4"	\$21	\$19	2.2
380038	24"	3/4"	4"	5"	22	20	3.3
380039	36"	1"	4"	6"	29	27	8.1
380040	40"	1"	4"	6"	38	36	8.9
380041	54"	1 1/4"	6"	8"	106	96	29

COPPER CLAD LIGHTNING KIT

Each kit contains 5' long by 1/2" diameter copper clad rod, one 6' long by 1/2" diameter copper wire plus one connecting bracket.

BRACKET ONLY

ITEM #	1-5	6+	LBS.
380036	\$32	\$29	.36

5' x 1/2" ROD ONLY

ITEM #	PRICE	LBS.
380035	\$58	1.2

WIRE ONLY

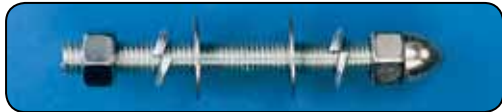
ITEM #	PER FOOT	LBS.
380034	\$8.00	.36

COMPLETE SET



ITEM #	1-5	6+	LBS.
380033	\$105	\$95	4.5

FOUNDATION SLEEVES, MOUNTING HARDWARE & LIGHTS



THRU WALL BOLTS

For Mounting Outrigger & Vertical Wall Mount Brackets

Zinc plated steel complete with one acorn nut, one hex nut, two washers & two lock washers.

SIZE	LBS	SILVER			CLEAR			BRONZE #313			WHITE			BLACK		
		ITEM #	1-5	6+	ITEM #	1-5	6+	ITEM #	1-5	6+	ITEM #	1-5	6+	ITEM #	1-5	6+
3/8" x 6"	.48	380042	\$11	\$9	380054	\$12	\$11	380066	\$12	\$11	380078	\$12	\$11	380090	\$12	\$11
3/8" x 12"	.78	380043	12	11	380055	13	12	380067	13	12	380079	13	12	380091	13	12
3/8" x 18"	1.1	380044	13	12	380056	14	13	380068	14	13	380080	14	13	380092	14	13
3/8" x 24"	1.4	380045	14	13	380057	15	14	380069	15	14	380081	15	14	380093	15	14
3/8" x 30"	1.7	380046	15	14	380058	16	15	380070	16	15	380082	16	15	380094	16	15
3/8" x 36"	2.0	380047	17	16	380059	19	17	370071	19	17	380083	19	17	380095	19	17
5/8" x 6"	.75	380048	13	12	380060	13	12	380072	13	12	380084	13	12	380096	13	12
5/8" x 12"	1.2	380049	16	15	380061	16	15	380073	16	15	380085	16	15	380097	16	15
5/8" x 18"	1.7	380050	15	14	380062	17	16	380074	17	16	380086	17	16	380098	17	16
5/8" x 24"	2.1	380051	15	14	380063	16	15	380075	16	15	380087	16	15	380099	16	15
5/8" x 30"	2.5	380052	17	16	380064	19	17	380076	19	17	380088	19	17	380100	19	17
5/8" x 36"	2.9	380053	19	17	380065	20	18	380077	20	18	380089	20	18	380101	20	18



MOUNTING BOLTS WITH EXPANSION SHIELDS

For Mounting Outrigger & Vertical Wall Mount Brackets

Zinc plated steel complete with one acorn nut, one washer & one lock washer.

SIZE	LBS	SILVER			CLEAR			BRONZE #313			WHITE			BLACK		
		ITEM #	1-5	6+	ITEM #	1-5	6+	ITEM #	1-5	6+	ITEM #	1-5	6+	ITEM #	1-5	6+
3/8" x 6"	.55	380102	\$13	\$12	380104	\$14	\$13	380106	\$14	\$13	380108	\$14	\$13	380110	\$14	\$13
5/8" x 6"	.81	380103	15	14	380105	17	16	380107	17	16	380109	17	16	380111	17	16



TUNNEL LIGHTS

Sold in sets only - 18" long by 6" diameter aluminum cylinders. Fixtures accept 150 watt flood lamps for up, down or up/down lighting (lamps not included in pricing below). Wiring not include in pricing below.

ADD ON FOR FACTORY SET-UP OF WIRING ON EXTERNAL HALYARD POLE - NO ACCESS DOOR \$290 w/ACCESS DOOR \$510

ADD ON FOR FACTORY SET-UP OF WIRING ON INTERNAL HALYARD POLE - NO ACCESS DOOR \$410 w/ACCESS DOOR \$630

NOTE: Access doors can only be supplied on 4" and larger diameter poles.

FOR POLE		SILVER			CLEAR			BRONZE #313			WHITE			BLACK		
DIA.	LBS	ITEM #	1-5	6+	ITEM #	1-5	6+	ITEM #	1-5	6+	ITEM #	1-5	6+	ITEM #	1-5	6+
5"	18	380112	\$930	\$840	380119	\$1,050	\$950	380126	\$1,050	\$950	380133	\$1,050	\$950	380140	\$1,050	\$950
5 1/2"	18	380113	930	840	380120	1,050	950	380127	1,050	950	380134	1,050	950	380141	1,050	950
6"	18	380114	930	840	380121	1,050	950	380128	1,050	950	380135	1,050	950	380142	1,050	950
7"	18	380115	930	840	380122	1,050	950	380129	1,050	950	380136	1,050	950	380143	1,050	950
8"	18	380116	930	840	380123	1,050	950	380130	1,050	950	380137	1,050	950	380144	1,050	950
10"	18	380117	1,050	950	380124	1,170	1,050	380131	1,170	1,050	380138	1,170	1,050	380145	1,170	1,050
12"	18	380118	1,050	950	380125	1,170	1,050	380132	1,170	1,050	380139	1,170	1,050	380146	1,170	1,050

Replacement lenses available - Item # 380190 1-5 \$123 ea. 6+ \$111 ea. Weight = .33 lbs.

LIGHTWEIGHT FLOODLIGHTS

These lights fit on any diameter pole and are supplied with a 150 watt clear tungsten halogen lamp.

ADD ON FOR FACTORY SET-UP OF WIRING ON EXTERNAL HALYARD POLE - NO ACCESS DOOR \$279 w/ACCESS DOOR \$490

ADD ON FOR FACTORY SET-UP OF WIRING ON INTERNAL HALYARD POLE - NO ACCESS DOOR \$390 w/ACCESS DOOR \$601



MODEL	ITEM #	COLOR	1-5	6+	LBS.
LWFL SIL	380192	SILVER	\$280	\$270	2.0
LWFL BR	380147	BRONZE	280	270	2.0
LWFL BL	380193	BLACK	280	270	2.0

NOTE: Access doors can only be supplied on 4" and larger diameter poles.



OBSTRUCTION (BEACON) LIGHT

This light measures 8 3/4" x 4 1/2" and is ideal for taller flagpoles near airports or flight paths. Lamp bulb is not included. Set-up of flagpole to accept this lighting fixture can be done at the factory; call for pricing.

MODEL	ITEM #	1-5	6+	LBS.
OL-R	380148	\$340	\$320	2.8