

# INTERNAL HALYARD PARTS & ACCESSORIES

## "M" - WINCHES



The "M" - Winch is gearless and self locking at any point, eliminating the need for a separate break. This direct drive winch provides for rapid raising & lowering of the flag with little effort. This improved design does not require any welding thus avoiding discoloration when an anodized finish is required. No monthly lubrication is needed and this winch system is easily adaptable to existing on-site flagpoles. The winch is inserted into the pole and secured with a stainless steel bolt on the back side of the pole. Standard colors are Silver, Bronze #313, White & Black. Please specify color when ordering. If not specified Silver will be sent. Other sizes available upon request. The pricing below does not include a winch handle which is sold separately - see "M"-Winch Handle pricing below.

MODEL	FITS POLE DIA.	LBS.	SILVER			CLEAR			BRONZE #313			WHITE			BLACK		
			ITEM #	1-5	6+	ITEM #	1-5	6+	ITEM #	1-5	6+	ITEM #	1-5	6+	ITEM #	1-5	6+
M-5	5" w/.125 WALL	1.3	360000	\$410	\$390	360009	\$440	\$410	360018	\$440	\$410	360027	\$440	\$410	360036	\$440	\$410
M-5	5" w/.156 WALL	1.3	360344	410	390	360345	440	410	360346	440	410	360347	440	410	360348	440	410
M-6	6"	2.1	360001	650	590	360010	680	630	360019	680	630	360028	680	630	360037	680	630
M-7	7"	2.3	360002	650	590	360011	680	630	360020	680	630	360029	680	630	360038	680	630
M-8	8"	4.5	360003	720	660	360012	770	710	360021	770	710	360030	770	710	360039	770	710
M-10	10"	4.9	360004	770	710	360013	800	740	360022	800	740	360031	800	740	360040	800	740
M-1034	10 <sup>3</sup> / <sub>4</sub> "	5.1	360005	900	860	360014	890	820	360023	890	820	360032	890	820	360041	890	820
M-12	12" w/.250 WALL	5.0	360466	900	860	360467	890	820	360468	890	820	360469	890	820	360470	890	820
M-12	12" w/.375 WALL	5.0	360006	900	860	360015	890	820	360024	890	820	360033	890	820	360042	890	820
M-1234	12 <sup>3</sup> / <sub>4</sub> "	7.9	360007	1,800	1,680	360016	1,850	1,700	360025	1,850	1,700	360034	1,850	1,700	360043	1,850	1,700
M-14	14"	8.1	360008	1,800	1,680	360017	1,850	1,700	360026	1,850	1,700	360035	1,850	1,700	360044	1,850	1,700

"M"-Winches can be mixed to achieve the higher quantity pricing.



## "M" - WINCH HANDLES

MODEL	ITEM #	FOR "M"-WINCH MODEL #	1-5	6+	LBS.
MH-5	360045	M-5	\$50.00	\$46.00	.50
MH-612	360046	M-6 THRU M-14	106.00	98.00	1.1

All Winch Handles on this page can be mixed to achieve the higher quantity pricing.

## HANDLE FOR STAINLESS STEEL WINCHES

This winch handle is designed to be used with any of the stainless steel winches described below.



MODEL	ITEM #	1-5	6+	LBS.
WH1	360051	\$40.00	\$38.00	1.3

All Winch Handles on this page can be mixed to achieve the higher quantity pricing.



## LOCKS & KEYS FOR "M"- WINCHES

MODEL	ITEM #	DESCRIPTION	1-5	6+	LBS.
M-L	360054	LOCK w/KEY	\$64.00	\$60.00	.08
M-K	360055	KEY ONLY	9.00	8.50	.01

## WINCH LUBRICANT

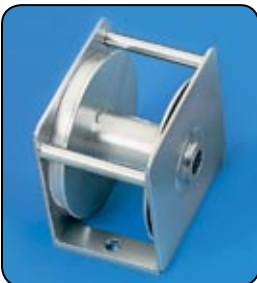
This silicone based aerosol spray is ideal to help keep stainless steel winches operating at peak performance ("M"-type winches do not require any lubrication).



ITEM #	1-5	6+	LBS.
360050	\$16.00	\$15.00	1.0

7.5 ounce

## STAINLESS STEEL WINCHES



These winches are available for use on flagpoles with a butt diameter of 6" or larger. These gearless winches utilize cast bronze internal brakes which release when a winch handle is inserted and rotational pressure is applied. The winch is locked at any position by removing the handle which engages the brake system. The small size is generally used on flagpoles up to 45', the large size is used on flagpoles from 50' thru 80' and the X-Large size is used on flagpoles higher than 80'. The winch is mounted to the inside of the flagpole with two 5/16"-18NC stainless steel bolts with mounting centers being 3 1/2". Recommended diameters of stainless steel cable are 1/8" or 5/32".

MODEL	ITEM #	SIZE	MIN. POLE OPENING		DRUM WIDTH	1-5	6+	LBS.
			HEIGHT	WIDTH				
SSW1	360047	SMALL	3 1/8"	4 1/8"	1 1/2"	\$420	\$390	3.5
SSW2	360048	LARGE	3 5/8"	4 1/8"	2"	420	390	3.8
SSW3	360049	X-LARGE	6 5/8"	4 1/8"	5"	710	660	4.8

Stainless Steel Winches can be mixed to achieve the higher quantity pricing.

All bronze colored accessories on pages 168 through 191 are supplied in a dark bronze #313 shade. If medium bronze #312, light bronze #311 or a custom color is desired please call for pricing.

# INTERNAL HALYARD PARTS & ACCESSORIES

## CAM ACTION CLEATS



Used in rope style internal halyard flagpoles. The mounted version is secured onto a 1 1/2" x 3 3/8" aluminum block with two #10-32NC stainless steel pan head screws. Both versions are supplied with two #10-32NC stainless steel mounting screws. Recommended maximum rope diameter is 5/16".

ITEM #	DESCRIPTION	DISTANCE BETWEEN BOLT CENTERS	LBS.		
			1-5	6+	LBS.
360052	MOUNTED	2 <sup>15</sup> / <sub>16</sub> "	\$30.00	\$27.00	.50
360053	UNMOUNTED	2"	18.00	17.00	.25



## STANDARD FLAG ARRANGEMENTS



Constructed of 1/8" stainless steel aircraft cable with a stainless steel thimble attached at each end with 2 copper crimps. These flag arrangements provide the method of attaching the flag or flags to the cable assembly. This is also an excellent method for changing the quantity of flags or the size(s) of flag(s) without having to change the entire cable assembly. Standard arrangements are supplied with either 2 or 3 stainless steel quick links depending on the recommended flag size. Deluxe arrangements are supplied with a more complete set of accessories.

MODEL	ITEM #	FOR FLAG SIZE	# OF QUICK LINKS	1-5	6+	LBS.
FA2	360079	2' x 3'	2	\$36	\$33	.50
FA25	360080	2 1/2' x 4'	2	39	36	.55
FA3	360081	3' x 5'	2	40	37	.55
FA4	360082	4' x 6'	2	42	39	.60
FA5	360083	5' x 8' or 5' x 9 1/2'	2	45	40	.65
FA6	360084	6' x 10'	2	49	45	.65
FA8	360085	8' x 12'	2	95	87	.70
FA10	360086	10' x 15' or 10' x 19'	3	98	89	.95
FA12	360087	12' x 18'	3	105	95	1.0
FA15	360088	15' x 25'	3	109	101	1.1
FA20	360089	20' x 30' or 20' x 38'	3	113	103	1.3
FA25	360090	25' x 40'	3	123	111	2.0
FA30	360091	30' x 50' or 30' x 60'	3	127	113	2.8

All Standard Flag Arrangements can be mixed to achieve the higher quantity pricing.

## DELUXE FLAG ARRANGEMENTS

Same description above as our Standard Flag Arrangements but supplied with flags snaps, shock spring where needed and safety cable where needed.

MODEL	ITEM #	FOR FLAG SIZE	SUPPLIED WITH				1-5	6+	LBS.
			QUICK LINKS	FLAG SNAPS	SHOCK SPRING	SAFETY CABLE			
FA2	360474	2' x 3'	2	2 (BRASS ESSL)	---	---	\$41	\$38	1.2
FA25	360475	2 1/2' x 4'	2	2 (BRASS ESSL)	---	---	45	40	1.3
FA3	360476	3' x 5'	2	2 (BRASS ESSL)	---	---	46	41	1.3
FA4	360477	4' x 6'	2	2 (BRASS ESSL)	---	---	48	43	1.3
FA5	360478	5' x 8' or 5' x 9 1/2'	2	2 (BRASS ESSL)	---	---	50	46	1.4
FA6	360479	6' x 10'	2	2 (BRASS ESSL)	---	---	55	50	1.4
FA8	360480	8' x 12'	3	2 (STAINLESS STEEL SSFS-2)	1	1	107	95	2.3
FA10	360481	10' x 15' or 10' x 19'	3	2 (STAINLESS STEEL SSFS-2)	1	1	109	98	2.6
FA12	360482	12' x 18'	3	2 (STAINLESS STEEL SSFS-2)	1	1	116	105	2.6
FA15	360483	15' x 25'	3	2 (STAINLESS STEEL SSFS-2)	1	1	120	109	2.7
FA20	360484	20' x 30' or 20' x 38'	3	2 (STAINLESS STEEL SSFS-2)	1	1	126	113	2.9
FA25	360485	25' x 40'	3	2 (STAINLESS STEEL SSFS-2)	1	1	129	116	3.6
FA30	360486	30' x 50' or 30' x 60'	3	2 (STAINLESS STEEL SSFS-2)	1	1	131	118	4.4

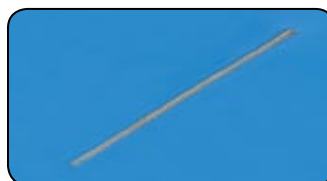


## SHOCK SPRING & SAFETY CABLE

Flagpoles utilizing an 8' x 12' flag arrangement or larger it is recommended that a shock spring and safety cable be used. The spring is zinc plated high carbon steel having an overall length of 5 1/2" with the coiled

section measuring 4". The 9' safety cable is constructed of 1/8" stainless steel aircraft cable with a stainless steel thimble attached at each end with 2 copper crimps.

MODEL	ITEM #	DESCRIPTION	1-5	6+	LBS.
IHSS	360092	SHOCK SPRING	\$10.60	\$9.40	.04
SCO	360093	SAFETY CABLE	7.00	6.30	.02



## STAINLESS STEEL CABLE

Priced Per Foot

MODEL	ITEM #	DIAMETER	1'-199'	200'+	LBS.
SSC32	360330	3/32"	\$1.40	\$1.20	.10
SSC18	360094	1/8"	1.40	1.20	.10
SSC316	360095	3/16"	1.60	1.40	.10

# INTERNAL HALYARD PARTS & ACCESSORIES

## CABLE ASSEMBLIES



Cable Assemblies can be mixed to achieve the higher quantity pricing.

Constructed of 1/8" and/or 3/16" stainless steel aircraft cable incorporating a stainless steel swivel to minimize the effect of unraveling due to the rotation of the truck assembly. The lower cable section has a copper cable stop attached to one end for installation into a stainless steel winch. This cable stop can easily be removed if the winch is an "M"-type which does not require a cable stop. The upper cable section is supplied with a stainless steel thimble, 2 copper crimps, and two ball cable stops, however, because this section must be threaded through the truck assembly, these parts are not attached to the cable before shipment and must be attached in the field. These standard cable assemblies are designed for flagpoles with a winch installed at 5' above grade.

ITEM #	EXPOSED HEIGHT OF FLAGPOLE	LOWER CABLE		UPPER CABLE		1-5	6+	LBS.
		DIA.	LEN.	DIA.	LEN.			
360056	20'	3/32"	20'	1/8"	20'	\$87	\$78	1.4
360332	25*	3/32"	25'	1/8"	25'	95	85	1.6
360057	25'	1/8"	25'	1/8"	25'	95	85	1.9
360333	30*	3/32"	30'	1/8"	30'	101	91	1.9
360058	30'	1/8"	30'	1/8"	30'	101	91	2.2
360334	35*	3/32"	35'	1/8"	35'	109	98	2.1
360059	35'	1/8"	35'	1/8"	35'	109	98	2.5
360060	40'	1/8"	40'	3/16"	40'	118	107	4.2
360061	45'	1/8"	45'	3/16"	45'	123	111	4.6
360062	50'	1/8"	50'	3/16"	50'	134	120	5.1
360063	60'	1/8"	60'	3/16"	60'	167	152	6.1
360064	70'	1/8"	70'	3/16"	70'	178	160	7.0
360065	78'	1/8"	78'	3/16"	78'	184	167	7.8
360066	80'	1/8"	80'	3/16"	80'	190	172	8.0
360067	90'	1/8"	90'	3/16"	90'	241	216	8.9
360068	100'	1/8"	100'	3/16"	100'	257	234	9.9
360069	110'	1/8"	110'	3/16"	110'	267	241	11
360070	120'	1/8"	120'	3/16"	120'	271	245	12
360071	130'	1/8"	130'	3/16"	130'	312	283	13
360072	140'	1/8"	140'	3/16"	140'	323	289	14
360073	150'	1/8"	150'	3/16"	150'	346	312	15
360074	160'	1/8"	160'	3/16"	160'	368	334	16
360075	170'	1/8"	170'	3/16"	170'	390	352	17
360076	180'	1/8"	180'	3/16"	180'	435	390	18
360077	190'	1/8"	190'	3/16"	190'	467	421	19
360078	200'	1/8"	200'	3/16"	200'	512	461	20

\*To be used with 5" diameter poles with our M-5 Winch installed.

## ROPE ASSEMBLIES



These assemblies are typically used in rope style internal halyard flagpoles where a cam cleat has been installed. Comes complete with a zinc plated carbon steel rope thimble attached to one end of the rope and stainless steel quick link.

**POLYPROPYLENE - Can be mixed to achieve the higher quantity pricing**

HT. OF POLE	LEN. OF ROPE	DIA. OF ROPE	LBS..	WHITE			SILVER			BRONZE #313			BLACK		
				ITEM #	1-5	6+	ITEM #	1-5	6+	ITEM #	1-5	6+	ITEM #	1-5	6+
20'	50'	1/4"	1.7	360096	\$18	\$16	360106	\$18	\$16	360116	\$18	\$16	360126	\$18	\$16
25'	60'	1/4"	2.1	360097	20	18	360107	21	19	360117	21	19	360127	21	19
30'	70'	1/4"	2.4	360098	22	20	360108	24	21	360118	24	21	360128	24	21
35'	80'	1/4"	2.7	360099	24	22	360109	25	23	360119	25	23	360129	25	23
40'	90'	1/4"	3.1	360100	27	24	360110	28	25	360120	28	25	360130	28	25

**NYLON WITH WIRE CENTER - Can be mixed to achieve the higher quantity pricing**

HT. OF POLE	LEN. OF ROPE	DIA. OF ROPE	LBS..	WHITE			SILVER			BRONZE #313			BLACK		
				ITEM #	1-5	6+	ITEM #	1-5	6+	ITEM #	1-5	6+	ITEM #	1-5	6+
20'	50'	3/16"	1.6	360137	\$28	\$26	360147	\$33	\$29	360157	\$33	\$29	360167	\$33	\$29
25'	60'	3/16"	1.9	360138	33	29	360148	39	36	360158	39	36	360168	39	36
30'	70'	3/16"	2.2	360139	37	34	360149	46	41	360159	46	41	360169	46	41
35'	80'	3/16"	2.5	360140	42	38	360150	52	48	360160	52	48	360170	52	48
40'	90'	3/16"	2.8	360340	60	47	360341	63	58	360342	63	58	360343	63	58

# INTERNAL HALYARD PARTS & ACCESSORIES

## BEADED RETAINER RINGS

Retainer rings are generally used with internal halyard flagpoles by providing a means of keeping the bottom of the flag close to the pole and as an aid to raise and lower the flag. Retainer rings can also be used on large multi-grommet flags on both external and internal halyard flagpoles as a means to keep the flags close to the pole and reduce the strain on the upper and lower grommets of the flag. These beaded rings are constructed of either 1" or combination of 1" & 2" diameter nylon balls strung onto 1/8" stainless steel aircraft cable with a stainless steel thimble attached to each end with two copper crimps. Complete with stainless steel quick link. Standard stock colors are White, Silver and Bronze #313. Please specify color when ordering. If not specified White will be supplied. The length of each retainer ring was determined by measuring from the outside tip of each thimble (the quick link was not included in the measurement).



RR5 THROUGH RR12



RR13 THROUGH RR36

MODEL	LENGTH	BUTT DIA. OF POLE	DIA. OF BALLS	LBS.	WHITE			SILVER			BRONZE #313		
					ITEM #	1-5	6+	ITEM #	1-5	6+	ITEM #	1-5	6+
RR5	30"	5"	1"	.75	360176	\$38	\$35	360194	\$45	\$40	360212	\$45	\$40
RR6	34"	6"	1"	.80	360177	39	36	360195	47	42	360213	47	42
RR7	38"	7"	1"	.85	360178	41	38	360196	49	45	360214	49	45
RR8	42"	8"	1"	.90	360179	42	39	360197	50	46	360215	50	46
RR10	50"	10"	1"	1.1	360180	47	42	360198	51	47	360216	51	47
RR11	54"	11"	1"	1.2	360181	50	45	360199	56	51	360217	56	51
RR12	58"	12"	1"	1.2	360182	51	47	360200	58	53	360218	58	53
RR13	62"	13"	1" & 2"	2.5	360183	95	87	----	----	----	----	----	----
RR14	66"	14"	1" & 2"	2.7	360184	101	91	----	----	----	----	----	----
RR16	74"	16"	1" & 2"	3.1	360185	116	105	----	----	----	----	----	----
RR18	82"	18"	1" & 2"	3.4	360186	131	120	----	----	----	----	----	----
RR20	90"	20"	1" & 2"	3.8	360187	145	131	----	----	----	----	----	----
RR22	98"	22"	1" & 2"	4.2	360188	160	145	----	----	----	----	----	----
RR24	106"	24"	1" & 2"	4.6	360189	176	160	----	----	----	----	----	----
RR30	124"	30"	1" & 2"	5.8	360190	209	190	----	----	----	----	----	----
RR32	132"	32"	1" & 2"	6.2	360191	223	200	----	----	----	----	----	----
RR34	140"	34"	1" & 2"	6.6	360192	245	223	----	----	----	----	----	----
RR36	148"	36"	1" & 2"	7.0	360193	257	234	----	----	----	----	----	----

Beaded Retainer Rings can be mixed to achieve the higher quantity pricing.

## ROPE RETAINER RINGS

Retainer rings are generally used with internal halyard flagpoles by providing a means of keeping the bottom of the flag close to the pole and as an aid to raise and lower the flag. Retainer rings can also be used on large multi-grommet flags on both external and internal halyard flagpoles as a means to keep the flags close to the pole and reduce the strain on the upper and lower grommets of the flag. These roped retainer rings are constructed of 3/16" nylon wire center halyard with a zinc plated carbon steel thimble attached to one end with an aluminum crimp. Complete with stainless steel quick link. Standard colors are White, Silver, Bronze #313 and Black. Please specify color when ordering. If not specified White will be supplied.



ALL SIZES

MODEL	BUTT DIA. OF POLE	LBS.	WHITE			SILVER			BRONZE #313			BLACK		
			ITEM #	1-5	6+	ITEM #	1-5	6+	ITEM #	1-5	6+	ITEM #	1-5	6+
RRR5	5"	.30	360230	\$16	\$14	360239	\$19	\$17	360248	\$19	\$17	360257	\$19	\$17
RRR6	6"	.30	360231	17	15	360240	20	18	360249	20	18	360258	20	18
RRR65	6 1/2"	.30	360232	18	16	360241	21	19	360250	21	19	360259	21	19
RRR7	7"	.32	360233	19	17	360242	23	21	360251	23	21	360260	23	21
RRR8	8"	.32	360234	20	18	360243	24	22	360252	24	22	360261	24	22
RRR10	10"	.34	360235	21	19	360244	25	23	360253	25	23	360262	25	23
RRR105	10 1/2"	.34	360236	24	22	360245	30	27	360254	30	27	360263	30	27
RRR115	11 1/2"	.36	360237	27	23	360246	34	30	360255	34	30	360264	34	30
RRR12	12"	.36	360238	29	25	360247	36	33	360256	36	33	360265	36	33
RRR16	16"	.50	360349	38	35	----	----	----	360350	47	42	----	----	----
RRR163	16 3/4"	.50	360351	47	42	----	----	----	360352	47	42	----	----	----

Rope Retainer Rings can be mixed to achieve the higher quantity pricing.

## NYLON RETAINER RING BALLS

Drilled to be strung onto 1/8" stainless steel aircraft cable.

ITEM #	DIA. OF BALL	COLOR OF BALL	1-99	100+	LBS.
360266	1"	WHITE	\$0.58	\$0.50	.02
360267	1"	SILVER	0.66	0.60	.02
360268	1"	BRONZE	0.66	0.60	.02
360269	1 1/2"	WHITE	2.60	2.40	.06
360270	2"	WHITE	4.00	3.60	.15

All bronze colored accessories on pages 168 through 191 are supplied in a dark bronze #313 shade. If medium bronze #312, light bronze #311 or a custom color is desired please call for pricing.

# INTERNAL HALYARD PARTS & ACCESSORIES

## INTERNAL HALYARD DOORS FOR ALUMINUM FLAGPOLES - WITH LOCK & KEYS



MODEL	FITS POLE DIA.	LBS.	SILVER			CLEAR			BRONZE #313		
			ITEM #	1-5	6+	ITEM #	1-5	6+	ITEM #	1-5	6+
IHD6	6"	.42	360271	\$126	\$120	360276	\$130	\$124	360335	\$130	\$124
IHD7	7"	.46	360272	120	114	360277	116	111	360336	116	111
IHD8	8"	.60	360273	112	110	360278	123	119	360337	123	119
IHD10	10"	.72	360274	125	119	360279	138	130	360338	138	130
IHD12	12"	.76	360275	138	130	360280	151	144	360339	151	144



MODEL	FITS POLE DIA.	LBS.	WHITE			BLACK		
			ITEM #	1-5	6+	ITEM #	1-5	6+
IHD6	6"	.42	360281	\$130	\$124	360286	\$130	\$124
IHD7	7"	.46	360282	116	111	360287	116	111
IHD8	8"	.60	360283	123	119	360288	123	119
IHD10	10"	.72	360284	138	130	360289	138	130
IHD12	12"	.76	360285	151	144	360290	151	144



### LOCK & KEYS FOR INTERNAL HALYARD DOORS

This lock is suited for any of the doors listed above.



### LOCK & KEYS FOR DOOR & FRAME UNIT

MODEL	ITEM #	DESCRIPTION	1-5	6+	LBS.
IHCL	360291	LOCK w/2 KEYS	\$13.00	\$12.00	.14
IHDK	360292	KEY ONLY	6.00	5.70	.04

MODEL	ITEM #	DESCRIPTION	1-5	6+	LBS.
DFL	360303	LOCK w/2 KEYS	\$13.00	\$12.00	.14
DFK	360304	KEY ONLY	6.00	5.70	.04



## INTERNAL HALYARD DOOR & FRAME UNITS

This unit is designed for 5" diameter poles and is used with rope style internal halyard systems. Each unit consists of a hinged door mounted to the front of the frame and a cam cleat (optional) mounted to the back of the frame. The entire unit is inserted into the flagpole shaft and secured with eight 1/4"-20NC stainless steel screws. Minimum hole opening 5 1/2" x 3 1/4". Lock & keys included. Standard stock colors are Silver, Bronze #313, White, Black and painted to match Clear Anodizing. Please specify color when ordering. If not specified Silver will be supplied.

DESCRIPTION	LBS.	SILVER			CLEAR			BRONZE #313		
		ITEM #	1-5	6+	ITEM #	1-5	6+	ITEM #	1-5	6+
WITH CAM CLEAT	3.0	360293	\$134	\$120	360295	\$145	\$131	360297	\$145	\$131
NO CAM CLEAT	2.8	360294	107	98	360296	118	107	360298	118	107

DESCRIPTION	LBS.	WHITE			BLACK		
		ITEM #	1-5	6+	ITEM #	1-5	6+
WITH CAM CLEAT	3.0	360299	\$145	\$131	360301	\$145	\$131
NO CAM CLEAT	2.8	360300	118	107	360302	118	107



For 25' Thru 39' Poles

For 50' Thru 78' Poles

## DOORS FOR FIBERGLASS INTERNAL HALYARD POLES

With Lock & Keys

MODEL	ITEM #	FOR POLE MODEL #	COLOR	1-5	6+	LBS.
FIHD-1	360305	FG25IH, FG30IH, FG35IH, FG39IH	WHITE	\$87	\$78	.38
FIHD-2	360306	FG25IH, FG30IH, FG35IH, FG39IH	BRONZE	95	87	.90
FIHD-3	360307	FG50IH, FG60IH, FG70IH, FG78IH	WHITE	190	176	.38
FIHD-4	360308	FG50IH, FG60IH, FG70IH, FG78IH	BRONZE	202	182	.90



For 50' Thru 78' Poles

For 25' Thru 39' Poles

## DOOR LOCKS & KEYS FOR FIBERGLASS INTERNAL HALYARD POLES

MODEL	ITEM #	FOR POLE MODEL #	1-5	6+	LBS.
FGL-1	360309	LOCK w/2 KEYS FG25IH, FG30IH, FG35IH, FG39IH	\$13.00	\$12.00	.38
FGK-1	360310	KEY ONLY FG25IH, FG30IH, FG35IH, FG39IH	5.60	5.00	.90
FGL-2	360311	LOCK w/2 KEYS FG50IH, FG60IH, FG70IH, FG78IH	13.00	12.00	.38
FGK-2	360312	KEY ONLY FG50IH, FG60IH, FG70IH, FG78IH	5.60	5.00	.90

All bronze colored accessories on pages 168 through 191 are supplied in a dark bronze #313 shade. If medium bronze #312, light bronze #311 or a custom color is desired please call for pricing.

# INTERNAL HALYARD PARTS & ACCESSORIES



CW35

## COUNTERWEIGHTS

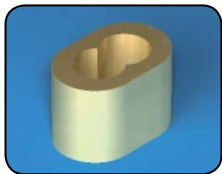
Fabricated from 2" diameter steel and then coated with plastisol. The 3 1/2" pound weights are supplied with one eyebolt attached to one end while the 7 pound and 14 pound weights are supplied with an eyebolt attached to each end.



CW7 & CW14

Counterweights can be mixed to achieve the higher quantity pricing.

MODEL	LENGTH	LBS.	WHITE			SILVER			BRONZE #313		
			ITEM #	1-5	6+	ITEM #	1-5	6+	ITEM #	1-5	6+
CW35	3 1/2"	3.5	360313	\$33.00	\$28.00	360316	\$33.00	\$28.00	360319	\$33.00	\$28.00
CW7	7"	7.0	360314	46.00	41.00	360317	46.00	41.00	360320	46.00	41.00
CW14	14"	14	360315	57.00	51.00	360318	57.00	51.00	360321	57.00	51.00



## CABLE & ROPE CRIMPS



## QUICK LINK Stainless Steel

MODEL	ITEM #	FOR CABLE OR ROPE DIA.		MATERIAL	1-5	6+	LBS.
CC3	360328	3/32"		COPPER	\$0.64	\$0.54	.01
CC1	360324	1/8"		COPPER	0.64	0.54	.02
CC2	360325	5/32"		COPPER	1.70	1.60	.02
ARC1	360326	1/4" - 5/16"		ALUMINUM	1.50	1.40	.02

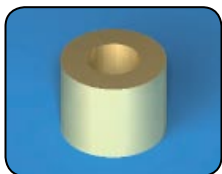
MODEL	ITEM #	LENGTH	WIDTH	1-5	6+	LBS.
SSQL	360329	2 7/8"	1 3/8"	\$8.90	\$6.70	.20



## CABLE & ROPE THIMBLES

IHTH-3 & IHTH-1 are Stainless Steel  
IHTH-2 is Zinc Plated Steel

MODEL	ITEM #	FOR CABLE OR ROPE DIA.		1-5	6+	LBS.
IHTH-3	360331	3/32"		\$2.30	\$2.10	.02
IHTH-1	360322	1/8" - 5/32"		2.40	2.20	.02
IHTH-2	300238	1/8" - 5/32"		1.00	0.80	.02



## COPPER CABLE STOP

MODEL	ITEM #	FOR CABLE DIAMETER	1-5	6+	LBS.
CS1	360327	1/8"	\$0.64	\$0.54	.01



## CABLE SWIVEL CONNECTOR

Stainless Steel

MODEL	ITEM #	LENGTH	WIDTH	1-5	6+	LBS.
IHCSC	360323	2 3/4"	1 1/16"	\$5.30	\$4.90	.20
---	360472	3 1/4"	1 7/16"	10.60	10.10	.28

